



DO106009

INITIAL Optics Bench

Complete optics set in a suitcase.

School level

Junior and senior high schools.

Technical features

- 3 black clip-on rails in plastic graduated on 1100 mm (total 1125)
- 1 LED token light 6V – 3W
- 8 plastic tokens \varnothing 40: 5 diaphragms with different \varnothing –number 1 – 1 and 3 slits
- 6 lenses PMMA \varnothing 40 F -100 / -200 / +50 / +100 / +150 / +250
- 5 sliding holders (1 with knurled screw)
- 4 lens - slide holders \varnothing 40
- 4 clips to clamp
- 1 prism holder
- 1 mirror 50x50mm
- 1 white screen in millimetres 100 x 150 mm
- Power supply included
- 1 suitcase with protection foams
- 1 instruction for use (can be customise)
- Suitcase dimensions: 320 x 430 x 115 mm
- Total weight: 1.9 kg



Product advantages

- **ALL IN 1:** bench can be dismantled and orderly in a suitcase with all accessories.
- Dismantled bench = **easy forwarding** to customers.
- **All components can be sold separately.**
- **Perfect for 5/6 students groups.**

Examples of experiments

- Focometry study (measure of a focal distance).
- Diffraction study with a laser.

COMPOSITION

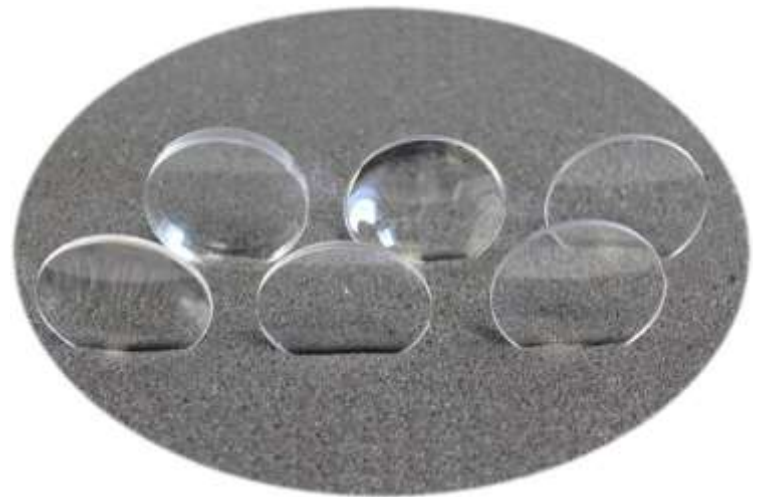


3 clip-on rails



LED token light

6 lenses \varnothing 40:
F +50 / +100 / +150 / +250 / -100 / -200

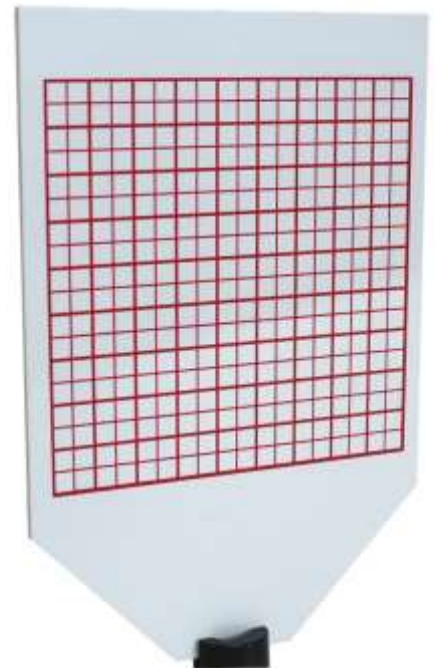


4 lens-slide holder \varnothing 40 INITIAL



5 sliding holder INITIAL

Screen INITIAL chequered 100 x 150



*5 diaphragms with different \varnothing –number 1 – 1
and 3 slits*

Prism holder INITIAL

